

The ZEBRA Diagnostic Kit is designed to monitor batteries data for statistical and maintenance purposes. It's based on ZEBRA Monitor software application connected to a target ZEBRA System through a proper PC-CAN interface.

## Content

- Peak CAN-USB opto-isolated Interface (500V) incl. driver (\*)
- ZEBRA Monitor application software
- (\*) other isolation values on request.

## Compatibility

- Vector CANcard/XL opto-isolated Interface (by means of 251 CAN opto cable) incl. driver (\*\*)
- (\*\*) compatible - not included.



Peak CAN-USB www.peak-system.com

## System Requirements

- PC or laptop, Pentium II 400 Mhz, 64 MB RAM (minimum configuration for best performances)
- Operating system MS Windows 95/98/NT4/2000/XP (2000 recommended) / VISTA
- 30 Mbyte free on local hard disk
- Minimum screen resolution 800x600 px
- Microsoft Excel 97 or higher for in-depth analysis of acquired data

## Functionalities

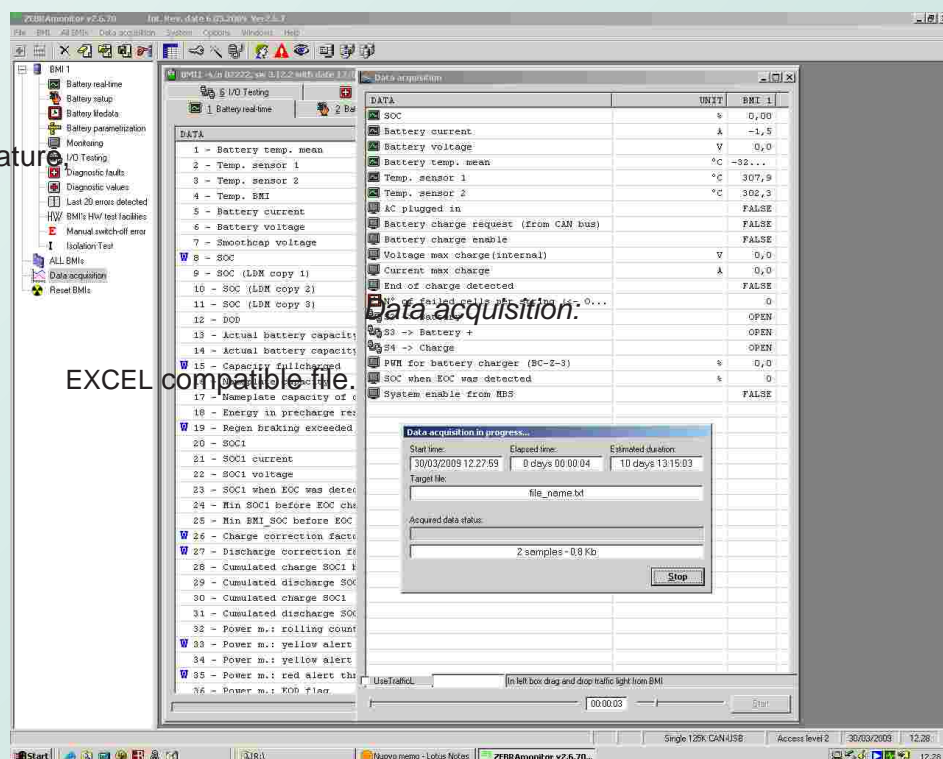
*Data monitoring:*

- Battery realtime parameters (current, voltage, temperature, state of charge...)
- Battery parametrization
- Diagnosis of detected faults

- All data can be saved in an

These functions can be applied to single or multi battery ZEBRA systems. If the PC is equipped with a modem and a proper remote control application, remote maintenance can be performed.

The information contained herewith is subject to change without notice



Typical data display

